

MISA SHIN GALLERY

1-2-7 Shirokane, Minato-ku, Tokyo 108-0072 JAPAN
tel:+81-(0)3-6450-2334 fax:+81-(0)3-6450-2335
www.misashin.com info@misashin.com

Press Release
March 2015

志水 兎王 SHIMIZU Jio
landscape

Dates : March 20 (Fri) - April 25 (Sat), 2015

Opening Reception : March 20 (Fri) 18:00 – 20:00

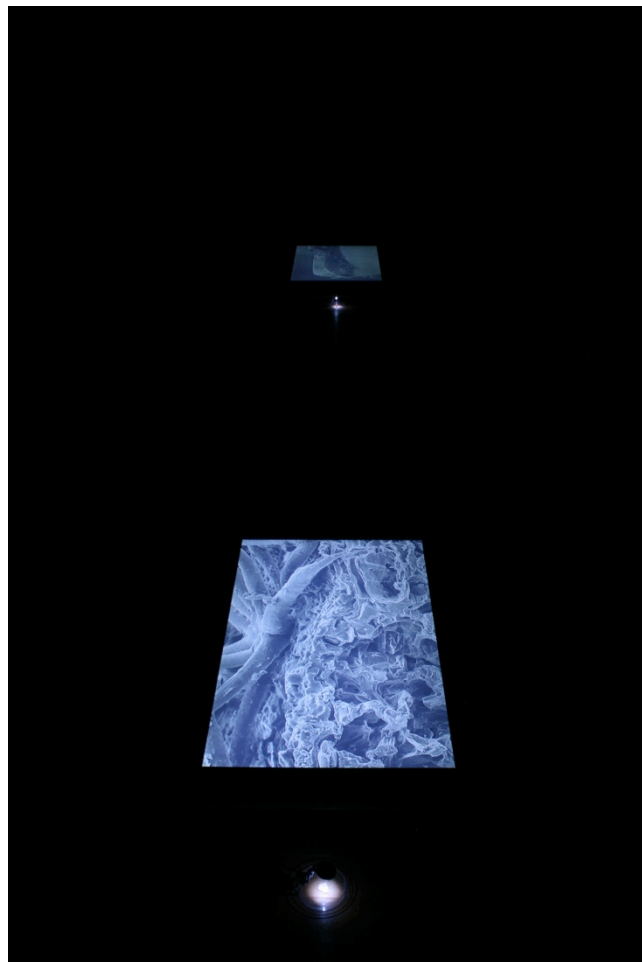
Gallery Hours : Tues-Sat 12:00 – 19:00 (Closed on Sundays, Mondays, National holidays)

MISA SHIN GALLERY is happy to announce its upcoming solo exhibition, "landscape", by SHIMIZU Jio. The exhibition will run from March 20th (Fri) through April 25th (Sat), 2015.

As an artist, Shimizu's work is rooted in the idea of positivism, in which he explores the relationships between art and natural science, and birth of motion and elements, by utilizing existing elements in the physical world, such as sound, light and vibration, and the physical phenomena it causes to our perception.

"landscape", Shimizu's second solo exhibition at MISA SHIN GALLERY, will present pictures of elements sampled from within the gallery, such as the floor, wall, office space which are magnified a hundred to over a thousand times to reveal elements.

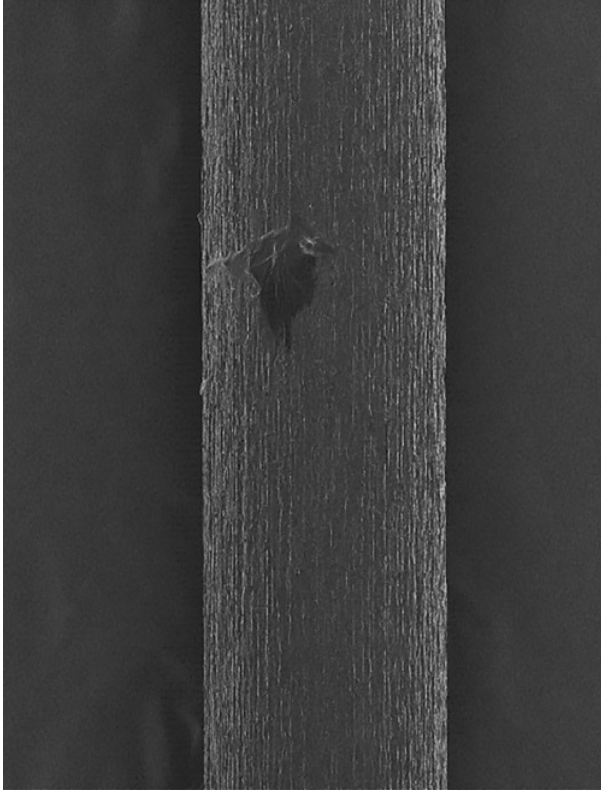
Unlike optical microscopes, electron microscopes work by projecting electrons on its subjects, allowing us to observe objects at a scale of electrons (less than 1nm), far smaller than the human eye's observable limit of the shortest light waves (400nm/ purple). In addition, there is no optical focal point (focus), and objects with a significant depth of field appear to the viewer as something very large, despite being less than 1mm in size, creating the illusion of a "landscape." Monotone images taken in



Installation view: SHIMIZU Jio :*threshold* 2014
Gallery Aube, Kyoto University of Art and Design, Kyoto, Japan

MISA SHIN GALLERY

1-2-7 Shirokane, Minato-ku, Tokyo 108-0072 JAPAN
tel:+81-(0)3-6450-2334 fax:+81-(0)3-6450-2335
www.misashin.com info@misashin.com



SHIMIZU Jio *landscape* 2015 Projected image (Detail)

a vacuum with intense electron beams conjure images reminiscent of inhabitable "space", a "lifeless view" or "death."

"landscape", an installation piece incorporating 3 monitors and an ultrasound speaker, features what cannot usually be seen or perceived, and renews our understanding of events by offering an experience unique in itself.

志水晃王 SHIMIZU Jio

Born Tokyo, 1966. Received his MFA in the Graduate School of Art at the Tokyo University of the Arts and is presently based in Saitama, Japan. In 1994 he founded WrK with Toshiya Tsunoda and Minoru Sato. He moved to Copenhagen in 2008 as an overseas trainee in receipt of a grant from the Agency for Cultural Affairs, thereafter remaining to live and work until 2010. Major exhibitions include "Roppongi Crossing" Mori Art Museum (Tokyo, 2004), the Busan Biennale 2008 at the Busan Museum of Art (Busan, 2008), "Simple Interactions. Sound Art From Japan" Museum of Contemporary Art Roskilde (Copenhagen, 2011), "On the edge 2012" Tungenes Fyr (Norway, 2012), "Elements" MISA SHIN GALLERY (Tokyo, 2012) and "Open Space 2014" NTT InterCommunication Center [ICC] (Tokyo, 2014).

Contact: info@misashin.com tel:03-6450-2334